

Pop Corn Is Important Crop In Southeastern Linn County

MOUNT VERNON FARMERS SHIP TWELVE CARLOADS ANNUALLY

Siggins And Johnson Are Leading Growers. Carry Both Hail And Fire Insurance; 1924 Crop Held For Higher Prices.

"How much did your pop corn go?" This is a question in most communities, but in the county of Mount Vernon, Linn county, there is a large acreage of good farm land in Franklin township devoted to the pop corn industry with the crops of this year are shipped out...

IOWANS IMPORTING FEWER DAIRY COWS

Imports of dairy cows continued to decline in 1923. The number of cows imported from Wisconsin was 14,571, a decrease of 234 from the 14,805 imported in 1922. The number of cows imported from Minnesota was 1,378, a decrease of 100 from the 1,478 imported in 1922.

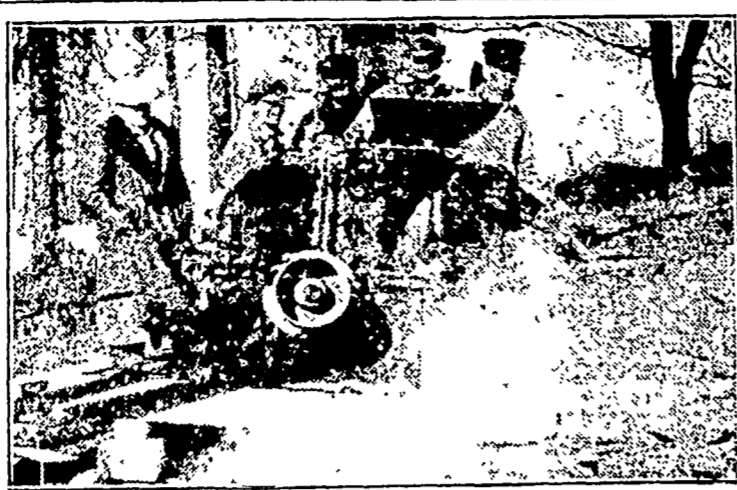
WORTH MORE THAN TWO MILLION

From Jan. 1, 1923, to Dec. 31, 1923, Minnesota supplied 14,571 dairy cows to Iowa, a total of 14,805 dairy cows for Iowa. This is a total of 14,805 dairy cows, valued at \$1,764,400. Iowa bought 10,321 head of cattle in Wisconsin in the year ending Dec. 31, 1923. These had a value of \$1,001,400. Twenty-three head of dairy animals to Iowa in the same year. Minnesota supplied that state with 15,000 head. In 1923, Minnesota supplied only 1,378 head to Iowa. They were valued at \$105,500.

MEANS MORE WORK

Pop corn is usually hand snipped in the field and husked in a machine. It is planted with a check row planter which drops seed every thirty inches. Raising pop corn is about one-third more work than growing field corn, according to those who have tried both.

BRINGING ALFALFA NEARER WITH FARM LINE CRUSHER



Limestone which lays near the surface in many places near Springville and Central City will be pulverized and put on top of the ground where it will sweeten the soil for alfalfa and clover during the next few weeks. In the above picture the machine recently bought by Lawrence and William D. West. Whittier is shown as it was being tried out for the first time on the T. Mitchell farm...

Buchanan Fair Made Expenses; Fourth Of July Helped Out

INDEPENDENCE, Jan. 9.—The Buchanan county Fair and Live Stock association held its annual meeting recently at the Commercial club rooms. Despite the fact that the last year was bad for county fairs throughout the state, the association here was able to pay out several old bills which were paid off. Total expenditures for the year were \$24,937.50 and total receipts \$27,456.64. The Fourth of July celebration put on by the association cost \$1,410.47 while the fair lost \$14.70. New officers elected for the coming year were J. B. Lux, president; T. E. Kennedy, vice president and E. E. Everett, treasurer. The secretary has not yet been named.

IOWA TOWNSHIP WOMEN ELECT BUREAU OFFICERS

BELLE PLAINE, Jan. 9.—An all day meeting of Iowa township farm bureau women Benton county was held at the home of Mrs. I. N. Stallins. The following officers were elected and committees appointed. President, Mrs. Laura Wehrman, vice president Mrs. Burnham secretary, Mrs. John Schild, treasurer, Mrs. Horace McLennan, program committee, Mrs. McLennan, Mrs. Cox, Mrs. Schild and Mrs. Burnham, February committee, Mrs. Donovan, Mrs. Snow and Mrs. Lahn.

BENTON BUREAU HEAD ASKS DOGS BE TIED

VAN HORNE, Jan. 9.—Sun Rieke, president of the Benton county farm bureau has issued a warning to owners of dogs to keep them tied up for the present, fearing a possible outbreak of rabies.

NORTHEAST IOWANS WIN AT MANCHESTER

Waterloo Poultryman Takes Trophy Cup Third Time; Junior Club Brings Birds To Show.

Special to The Gazette. MANCHESTER, Jan. 9.—John T. Fenelon of Waterloo was the winner of the handsome silver cup given by the Manchester Commercial club for the best and largest display of chickens at the Delaware County Poultry show which closed today. As he had already won this same honor twice previously he is now entitled to the permanent ownership of the cup. Mrs. H. E. Gipper of Strawberry Point won the silver cup given by a local produce company for the best hen in the American class and W. J. Schless of Manchester showed the best pen with the American class exhibited.

MAKE FIRST PLANS FOR POULTRY SHOW

The city auditorium will be put in shape to handle at least 3,000 birds when the state poultry show is brought here next year according to a statement today from the Chamber of Commerce. The basement will be whitewashed and renovated to accommodate a big exhibit of eggs, dressed fowl and poultry. While every foot of space on the floor above will be used for chickens, sets will be removed from the lobby and more birds will show in the space there with the pet stock show. It is planned that the Chamber of Commerce will contribute liberally toward the financial support of the exhibit and will do everything in its power to make the show the biggest yet held in the state, officials say.

MRS. GOTSCH LEADS FAIRVIEW MEETING

MARTELLE, Jan. 9.—Fairview township farm bureau women of District No. 8 met at the home of Mrs. John Allen Friday afternoon. Jan. 2. Mrs. Ed Gotsch of Greenfield township gave the lesson on diet for pre-school age children. She also gave a helpful summary of the first year's nutrition work.

IOWAN PAYS \$75 FOR ONE RHODE ISLAND RED

ALLISON, Jan. 9.—Fred Chis, chairman local chapter of Rhode Island Poultrymen, paid a Missouri poultryman \$75 for a cockerel. The bird was bought during the Chicago collection show.

Daily Farm News For Farm Folk

Edited by C. P. STREETER

his explanation of the basis for his decision was valuable to exhibitors and visitors. An interesting feature was the showing by the Junior Poultry club, County Superintendent W. A. Oettle, with the officers of the poultry association, arranged last spring for the purchase of eggs and their distribution among interested youngsters over the county. The results in the club were satisfactory although some of the children sold their birds instead of bringing them to the show as agreed. However, enough kept faith to make a creditable showing in various breeds.

EXPECT 2,000 AT AMES SHORTCOURSE

AMES, Jan. 9.—(By Associated Press)—More than 2,000 visitors are expected for the annual Ames Farm and Home week, to be held Feb. 2 to 7, plans for which are being completed by the special Iowa State college short course committee. For the first time this year the junior short course will not be held in connection with the regular short course. It having been held during the Christmas holidays. According to present plans, the women visitors will live in the women's dormitories and the men in private homes. The annual state high school judging contests will be held during this week also. Grain and livestock judging teams representing more than 100 high schools of the state will be here to compete for the honor of being the best judging team in Iowa. Appropriate trophy cups have been offered for the winning teams and individuals. One of the biggest features of the week will be the state corn show to be held in Ames the same week and which will be housed in the big armory and experience of other years has proved that even this big show is none too much for the many entries.

PUREBREDS WIN TOP PLACES, MONTICELLO

Nine Out Of Ten Leaders In Test Association Registered; Grades Often Win Out.

Special to The Gazette. MONTICELLO, Jan. 9.—An unusual occurrence in cow test association work was recorded in the Monticello association for December when nine of the ten high cows were pure bred and registered. Grades often figure prominently in the top winnings in the average association. The report for December gives the average production on 233 cows at 520 pounds milk and 22.4 pounds butterfat. This is an increase of 19 pounds over the November average. The five high herds were owned as follows: Shovel and Orcutt, six-top purebred and grade Holsteins; 34.6 pounds butterfat; Bohrens brothers, twelve grade Holsteins, 30.6 pounds; Tobiasson brothers, nineteen purebred Holsteins, 30.5 pounds fat; H. A. Jenschler, eight top mixed cows, 27.9 pounds fat; and C. A. Hein, eight purebred and grade Holsteins and Shorthorns, 27.4 pounds fat. Shomont farms owned the high cow for the month, a purebred Holstein that produced 85.5 pounds fat in only twenty six days. Tobiasson brothers came next with another Holstein that made 57 pounds and a third that made 55.1. Shovel and Orcutt had the fourth cow and the Tobiassons the next two.

EXPECT IOWA BUREAU TO URGE M'NARY PRINCIPLE

DES MOINES, Jan. 9.—(By Associated Press)—That a movement will be made to have the Iowa Farm Bureau federation convention adopt a resolution asking immediate passage of the McNary-Haugen bill or some similar measure is indicated in the report of the federation which says many county bureaus have already gone on record for such legislation.

ORDERS CHICKENS BE INSPECTED IF THEY ARE SHIPPED

There is no European fowl plague in Iowa chickens but in order to prevent a spread of disease of any sort Mark Thornburg, secretary of agriculture, has issued a bulletin prohibiting the movement of chickens of any kind from place to place inside the state or from the state to outside places unless sanctioned in first obtained from an authorized veterinarian. A copy of the order has been received by Dr. J. W. Griffith, assistant state veterinarian here.

AID FOR CATTLEMEN IS NEARLY OUTLINED

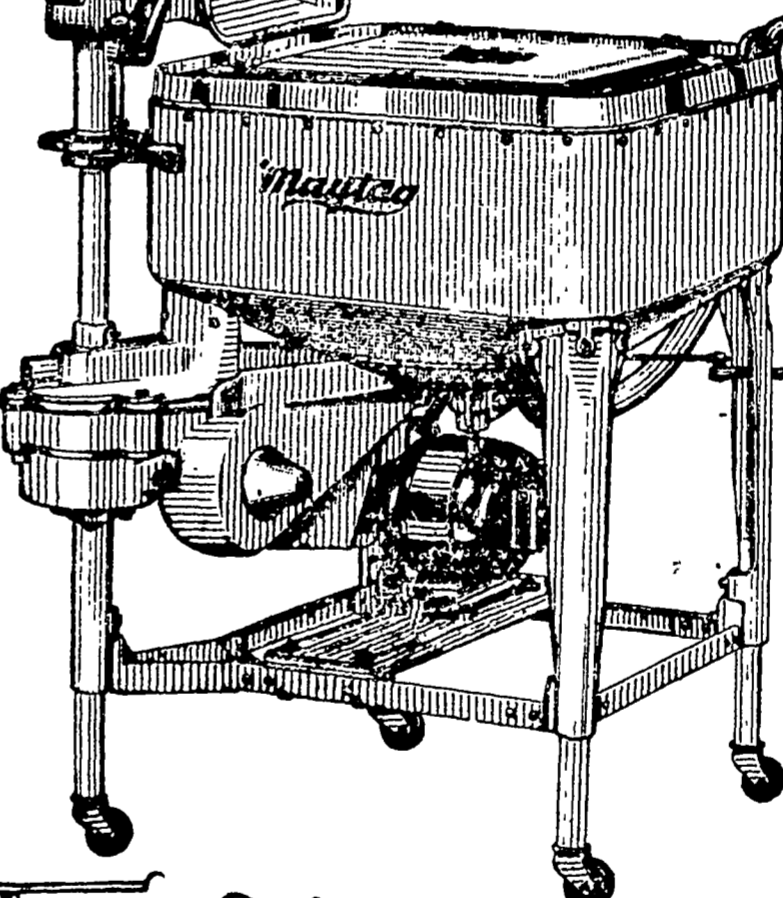
WASHINGTON, D. C., Jan. 9.—(By Associated Press)—Nearing the end of its deliberations on methods of assisting the livestock industry, the President's agricultural commission has arranged to hear today the views of the national council of farmers' co-operative marketing associations as represented by a special committee. Orderly marketing of the cattle men's products is one of several phases of the industry being considered by the commission which expects to draw up its recommendations by the end of the week. The National Co-operative council has recorded itself as opposed to any sort of governmental aid or subsidy for co-operative marketing organizations.

LOUISVILLE JOGE HEADS NATIONAL CO-OP COUNCIL

WASHINGTON, Jan. 9.—Judge Robert W. Bingham of Louisville was re-elected chairman of the National Council of Farmers co-operative marketing associations here today. and Carl Williams, Oklahoma (1922, vice-chairman, L. J. Lawler of California was added to the executive council.

"I prefer to test it first"

That's just exactly the way we want you to feel about it



- ### 9 Outstanding Maytag Features
- 1.—Washes faster. The Gyrafoam Principle creates a more highly energized, turbulent and continuously effective water action. No idle water.
 - 2.—Washes cleaner. The Gyrafoam Principle mixes the soap evenly through the water, and forces the super-cleaning, soaping washing solution through the meshes of the clothes. No idle suds.
 - 3.—Largest hourly capacity in world—50 lbs. ordinary family wash per hour.
 - 4.—Most compact washer made—takes floor space only 25 inches square.
 - 5.—Cast aluminum tub can't warp, rust, rot, swell, split or corrode.
 - 6.—Easily adjusted to your height, and height of tubs.
 - 7.—Clothes can be put in or taken out while washer is running.
 - 8.—Tub cleans itself in 30 seconds.
 - 9.—Metal swinging wringers. Low. Swings into 7 positions. Adjusts itself automatically for handkerchiefs or blankets. Automatic drainboard. Instant tension release. All parts enclosed.

WE make strong claims for the Maytag Gyrafoam Washer. It's hard not to. Still, when we hear what women say who are using the Maytag, we feel that our claims are decidedly conservative. But, we don't ask you to buy the Maytag because of the good things that are said about it. Rather you wouldn't—we would prefer to have you appraise its advantages by testing the washer right in your own home.

Call the Maytag dealer. Have him bring you a Maytag. Wash with it. Wash anything and everything from a filmy, sheer georgette to greasy, grit-impacted overalls—you'll find a revelation in washing principles—the discovery of the decade! —the washer which in two short years has leaped into indisputable world leadership. Don't delay trying it.

THE MAYTAG COMPANY, Newton, Iowa
NORTHWESTERN BRANCH: 115 Washington Ave., North, MINNEAPOLIS, Minn.

Maytag Gyrafoam Washer

WITH CAST ALUMINUM TUB

Deferred Payments you'll never miss

Call one of the authorized Maytag dealers listed below

RAISE 2,500 ACRES ALFALFA IN JACKSON

Special to The Gazette. JACKSON, Jan. 9.—Farmers from all parts of Jackson county attended the annual meeting of the farm bureau held Wednesday afternoon in the community room of the American Savings bank here. Mr. B. Walker, president, opened the meeting with a report of the year's work. He said the most important part of the total year's work was the alfalfa projects undertaken.

County Agent Hansen, the secretary and the treasurer gave reports which showed the local farm bureau in fourth place. Hayes New President. The following officers were elected: President, Alex. J. Hansen; secretary, Charles J. Hansen; treasurer, Charles J. Hansen. The meeting closed with a prayer.

THESE ARE plenty of opportunities that they will not come to you. You must go to the classified section.

Be Sure to See the Delco-Light Washing Machine. It has many features that are certain to appeal strongly to the woman who desires to own only the best in washing equipment. It is simple, safe, convenient and washes clothes clean.

Easy Terms

DEPENDABLE DELCO-LIGHT PRODUCTS

THE ELECTRIC EQUIPMENT CO. 128 First Avenue E. Phone 1091

DIAMONDS BANK

Part of Your DIVIDENDS In One of Our DIAMONDS

They Will Pay You Daily Dividends. How? Come Up. Let Us Explain.

Our Elgin Special, White or Green Gold, \$12.45 a Few Left, Special at EASIEST TERMS

A BEAUTIFUL DIAMOND RING, 18K WHITE GOLD MOUNTING, FULL CUT DIAMOND \$10.00

JUDY & Co.

SECOND FLOOR HIGLEY BUILDING